

Paradigm OpsLink®



**Data Management
& Interoperability**

Paradigm OpsLink®

Paradigm OpsLink provides operating companies with the ability to make rapid and informed decisions while drilling to maximize productivity and minimize drilling costs. Fast and flexible access to real-time WITSML-based MWD and LWD data provides key information required by asset teams to make these decisions.

Data Mapping

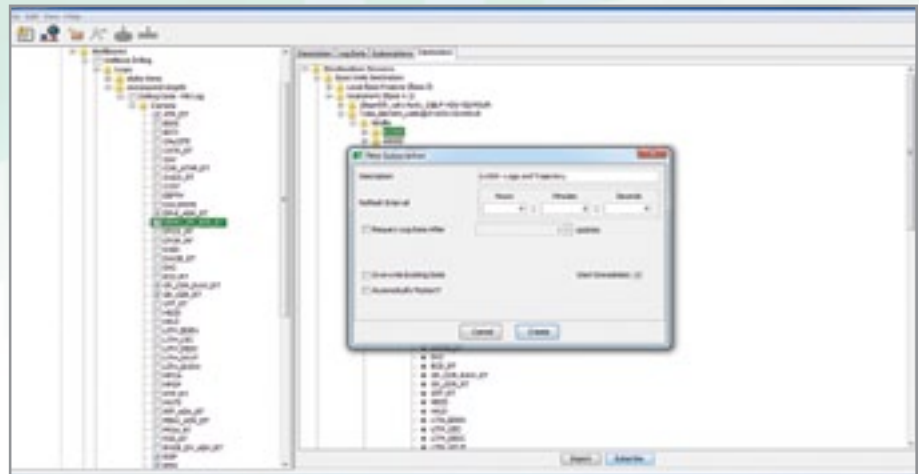
Paradigm OpsLink provides a graphical representation of databases for mapping real time data objects from a WITSML source to a specific data repository. It offers a view of both the source and destination data structures, enabling the source and target data objects to be easily identified and selected.

The OpsLink interface includes an Item Description panel that provides more detailed information about available data.

Import & Subscriptions

The import mode enables data to be acquired from a WITSML file or a WITSML server as a one-time download. The subscriptions mode allows data to be acquired on a continuous update basis. Through a subscription, the user is able to control the frequency of updates to the data repository and specify whether existing data is to be replaced.

Once a subscription has been initiated, it usually requires no further user intervention.



Setting up an OpsLink subscription to transfer WITSML log data to a Paradigm Epos database

Data Management

OpsLink can support multiple simultaneous subscriptions from multiple WITSML providers. Once defined, these subscriptions can be managed from a single subscription panel.

An Event Manager provides detailed status information, allowing the user to monitor the status of current subscriptions.

OpsLink automatically handles loss of connectivity to a WITSML provider while a subscription is active.

Databases

Paradigm users have the option to store data acquired by OpsLink in Paradigm data repositories, such as the Paradigm Geolog® well data repository or the

Paradigm Sysdrill® drilling database. It is also possible to populate third-party data repositories such as OpenWorks® and GeoFrame® using Paradigm Epos® data links.

Features

- Support for WITSML 1.2 and 1.31 and Well, Wellbore, Wellbore Geometry, Trajectory, Log and Tubular objects
- Support for multiple simultaneous subscriptions from multiple WITSML providers
- An Event Manager providing detailed status information

The Paradigm Advantage

- + Enables timely, efficient and accurate data exchange between rig site acquisition systems and office-based software applications and data stores.
- + Provides desktop users with real-time data in order to make decisions based on the latest available information.
- + Enables real-time workflows in Geolog, Geolog Geosteer®, Sysdrill and SKUA®/GOCAD®.